



Model 767

Front Opening Split-Top Shield



Nuclear



Healthcare



Homeland
Security
& Defense



Labs and
Education



Industrial and
Manufacturing



KEY FEATURES

- Four-inch low background lead
- Graded tin and copper liner
- Fully clad – no exposed lead
- Full area front door
- Synchronized split top door
- Lockable door latch
- Textured epoxy finish

DESCRIPTION

The 767 is a full-size and full-featured lead shield for use with germanium detectors having a vertical orientation. It has several unique design features and is built with a great deal of attention to fit and finish. The 767 features 10 cm (4 in.) lead thickness and is jacketed by a 9.5 mm (3/8 in.) steel outer housing. The graded liner consists of a tin layer of 1 mm (0.040 in.) thickness and a copper layer of 1.5 mm (0.062 in.) thickness. There is no exposed lead in the 767 with or without the doors closed. The inside dimensions are 28 cm (11 in.) diameter by 40.6 cm (16 in.) high.

The top doors of the 767 are linked so they open and close together regardless of which is actuated. The front door opens to the right on precision adjustable hinges and provides full shield access.

A novel latch secures both the front and top doors and provides a means to lock the shield with a user-supplied padlock.

The shield table is equipped with leveling legs and with braces which allow the assembled shield to be moved with a simple pallet truck.

The 767 is finished outside with an attractive textured light gray epoxy paint. The copper interior has a brush grain finish with a clear polyurethane coating to retard tarnishing.

Model 767 Front Opening Split-Top Shield

SPECIFICATIONS

MATERIALS

- OUTER JACKET – 9.5 mm (3/8 in.) thick low carbon steel.
- BULK SHIELD – 10 cm (4 in.) thick low background lead.
- GRADED LINING – 1 mm (0.040 in.) tin and 1.6 mm (0.062 in.) copper.

WEIGHT

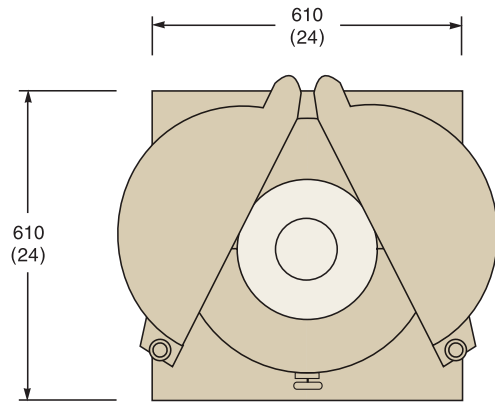
- 1088 kg (2400 lb); 1134 kg (2500 lb) shipping weight.

FINISH

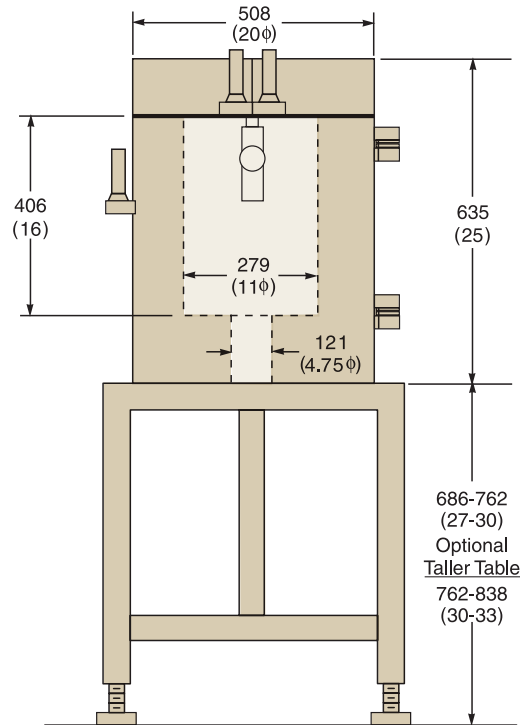
- CANBERRA light grey textured epoxy.

OPTIONS

- Model CFE-4 clamp-on cold finger extension.
- Model PHW Special Preamp Hardware (7500 only).
- Model 7415 Detector Lift (for use with MAC's and Cryo-Pulse® 5 plus).
- Model 767-1 Annular Plug (7500 only).
- Model 767-2 Annular Plug (7500SL only).
- Model 767-3 Split Annular Plug (7500SL-RDC only).
- Model 767-5 Taller Table (7500SL-RDC only).



Top View
Dimensions in mm (inches)



Front view
Dimensions in mm (inches)



Top doors are linked – so they open and close together



Front door provides full-area access

Cryo-Pulse is a trademark and/or registered trademark of Mirion Technologies, Inc. and/or its affiliates in the United States and/or other countries.



©2017 Mirion Technologies (Canberra), Inc. All rights reserved.

Copyright ©2017 Mirion Technologies, Inc. or its affiliates. All rights reserved. Mirion, the Mirion logo, and other trade names of Mirion products listed herein are registered trademarks or trademarks of Mirion Technologies, Inc. or its affiliates in the United States and other countries. Third party trademarks mentioned are the property of their respective owners.

CANBERRA